

What is not being proposed in this consultation

- Changes to 20 Minutes free parking
- Changes in the diesel levy
- Emissions based charging

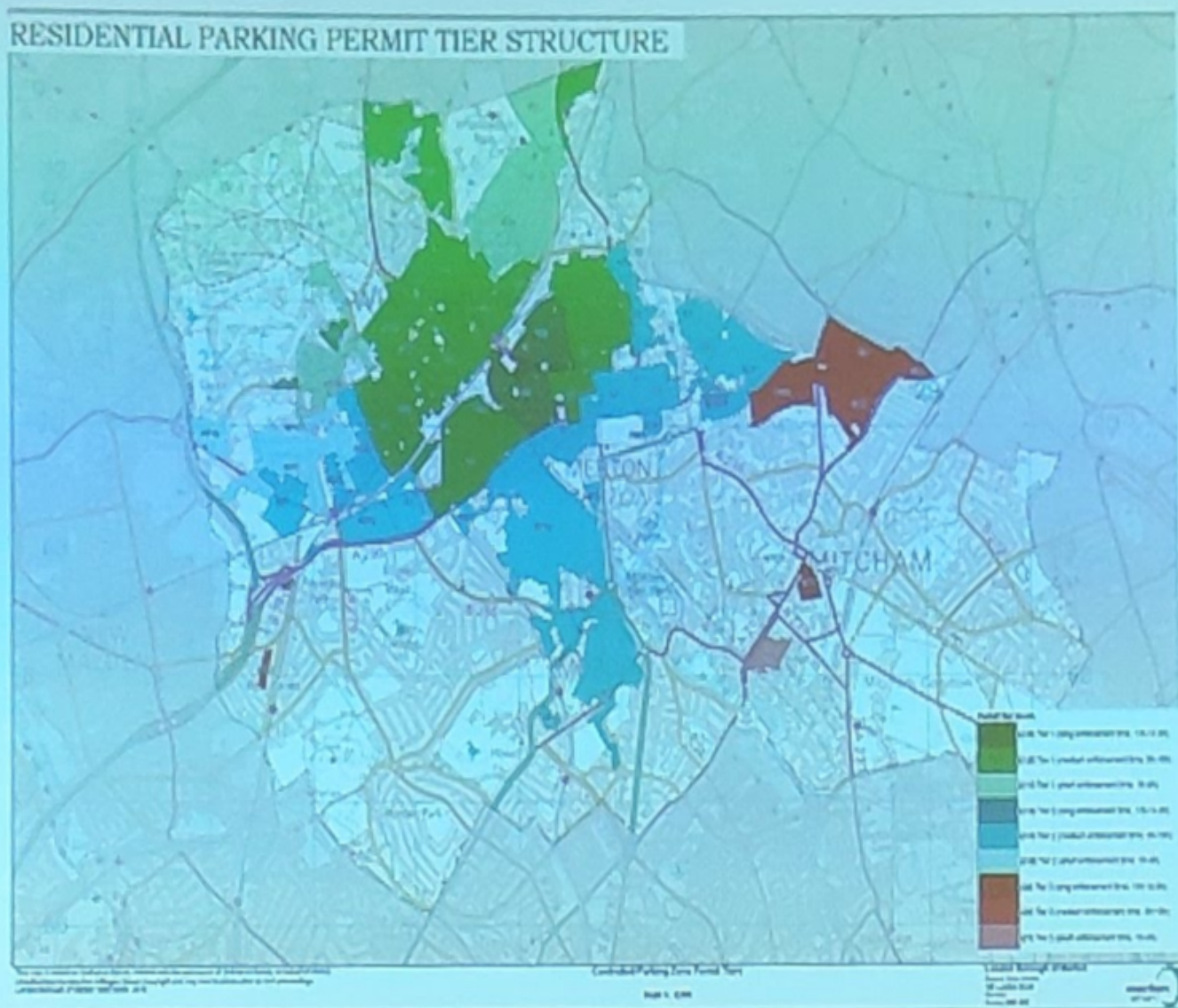
What is being proposed

- The Council is consulting on parking charges until 5th May 2019
- This includes :
 - Charges in council owned car parks
 - *Pay and Display* charges 'on street'
 - Resident and visitor permit charges in Controlled Parking Zones
- It is proposed that charges will increase but there will continue to be incentives and lower charges for electric vehicles

What is being proposed

- A charging system that :
- Is fair and proportionate recognising that there are parts of the borough that are better served by public transport;
- Reflects the resources to enforce Controlled Parking Zones that have longer operating hours;
- Encourages active transport [walking and cycling] as well as public transport
- Is representative of, Mayors Transport policy, other council policy such as Air Quality and compliments surrounding boroughs similar sustainable transport endeavours.

Controlled Parking Zone Tier Structure



Pay and Display Charging Structure



Why is this being proposed ?

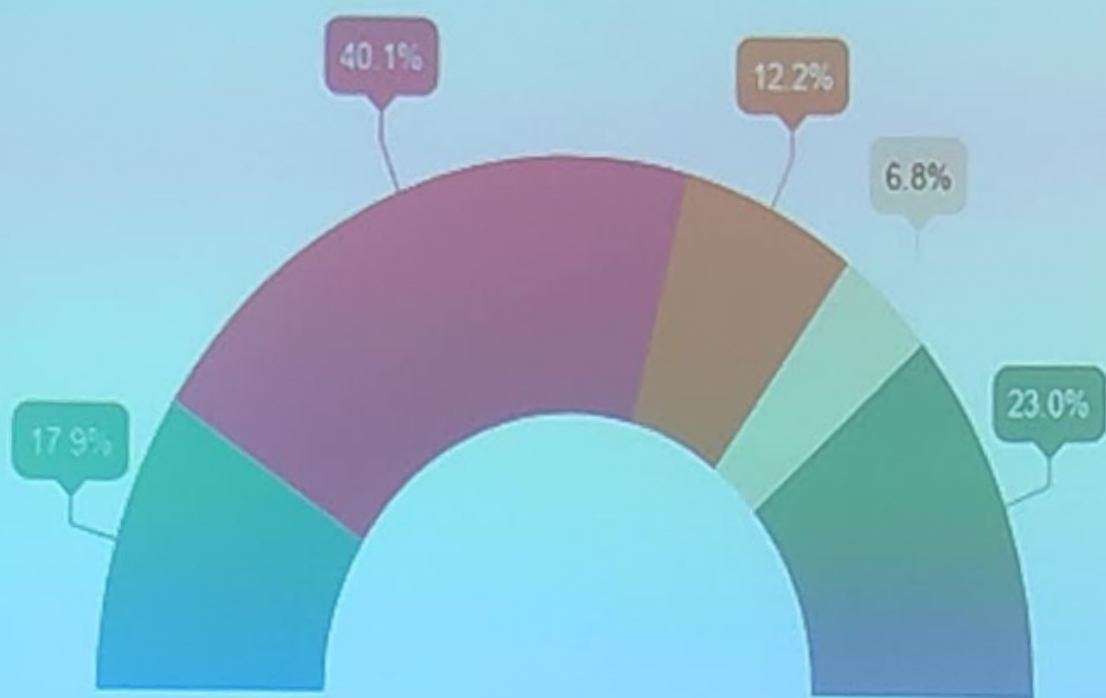
- Incentive for less car use, meaning fewer trips by car
 - Over one third of all the car trips made by London residents could be walked in up to 25 minutes
- Less car use meaning less vehicle emissions and less **air pollution**:
 - The **main source of air pollution** is from the vehicles on our roads.
 - An estimated **9,000 deaths a year in London** are attributable to the air pollution.
 - Other **health problems** are caused or worsened eg heart disease, dementia.
 - Most people with asthma say that **poor air quality makes asthma worse**.
 - 60% of children and young people in Merton, say air quality is a 'problem', 'big problem', or 'very big problem'.

Why is this being proposed ?

- Less car use means **more physical activity** through use of public transport, walking or cycling.
 - More physical activity lessens the obesity epidemic. **150 primary school classes of Merton children** are overweight.
 - Almost **60% of Merton adults** are overweight.
 - Diabetes and other long term health conditions linked to obesity will get worse.
- Less car use is **good for the economy and for business** as the efficiency of freight and commercial journeys improves
- **There isn't one single solution.** Increasing parking charges is part of the solution at local level
- Most car charges have not increased since 2009



Children and young people in Merton care about air quality:



■ No problem at all ■ A problem ■ A big problem
■ A very big problem ■ Don't Know

Question 24.0

How much of a problem is the cleanliness of the air in my area?

This single response question was answered by 1,174 respondents.



Where can I find out more?

More information

- A copy of the proposed Order and other documents giving more detailed particulars of the Order, including the Council's statement of reasons and plans can be inspected Monday to Friday during normal office hours at:
 - Merton Link, Merton Civic Centre, London Road, Morden, Surrey.
- Further information can be viewed on the Council's website at: www.merton.gov.uk/parkingconsultation2019 and at all Merton operated libraries.

Public Notices on street & in the local press.

- The Council has placed a minimum of 6 Notices per street in each CPZ zone.
- A notice has been attached to each Pay and display machine, both on street and in or car parks.
- A Notice has been published in the Local Newspaper
- MyMerton has a feature article, (delivered to all residents)

How can I support or make representation on this proposal?

We welcome your comments

Any person wishing to make representation or object on the proposals should visit:

www.merton.gov.uk/parkingconsultation2019

We have an online survey and opportunity to submit representations

or

In writing to Parking Services, the London Borough of Merton, Merton Civic Centre, London Road, Morden, Surrey, SM4 5DX quoting reference **Parking Consultation 2019** or by email to parkingconsultation2019@merton.gov.uk, no later than **5 May 2019**.